

Shanghai Liangxin Electrical Co., Ltd.

# Product Specification of NDB6-125

Products Name: Moulded Case Circuit Breaker

Products model: NDB6-125

Date: 20201215

Prepare	Feng Dai	Date	2020-12-15
Review	ZhiQiangHuo	Date	2020-12-15
Approve	YangZhang	Date	2020-12-15

Revision record					
Version	Revise contents	Revision date	Reviser	Reviewer	Approver
0	Initial issue	20160126	Heng Ke	Huo zhi qiang	Wei Yang
1	The new standard	20160906	Heng Ke	Huo zhi qiang	Wei Yang
2	Upgrade	20181019	Feng Dai	Huo zhi qiang	Wei Yang
3	Upgrade	20201215	Feng Dai	Huo zhi qiang	Yang Zhang

### 1、Applicable scope and purpose

- Short -circuit protection
- Over-load protection
- Control
- Isolation

NDB6-125 breaker is also widely used in the final distribution of solar, industry, buildings ,energy, telecom and infrastructure sectors.

### 2、Picture: (The picture is for reference only; the specific kind prevail)



1P product



2P product



3P product



4P product

### 3、Model and implication:

ND	B	6	—	125	C	63	/	1
Nader	Breaker	Design code		Frame Rating 125A	Tripping characteristic C、D	Rated current(A) 63,80, 100,125		Poles 1=1P, 2=2P, 3=3P, 4=4P

### 4、Main technical specification

- electric parameter
  - Rated working voltage :AC230V/240V, DC60/80/125V (1P),AC400/415V(2P,3P,4P)
  - Rated current:C: 63A, 80A, 100A, 125A  
D: 63A, 80A, 100A
  - Rated breaking capacity : Rated operating short circuit capacity:Ics=7.5kA  
Rated ultimate breaking capacity: Icu=15kA
  - Impulse voltage endurance : 4kV  
Rated nominal insulation voltage:1000V
  - Application category : A
- Isolation function
- Practical breaking instructions
- View window within the green identification said contact in the off position

- Mechanical life: 10000 times;
- Wiring: Tunnel type terminal;
- 10 mm<sup>2</sup> – 50 mm<sup>2</sup> conducting wire.
- Standards and Certificates
  - GB/T 14048.2、IEC 60947-2
- Environmental requirements: RoHS

## 5、Normal working environment

- ambient temperature: -40℃ ~ +70℃
- Air relative humidity: ≤95%
- height: ≤2000m
- pollution degree :3
- service place without significant vibration and impact

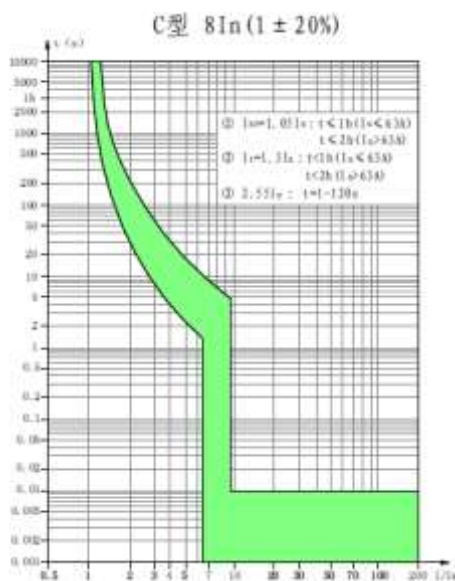
## 6. Tripping characteristic

### C type curve

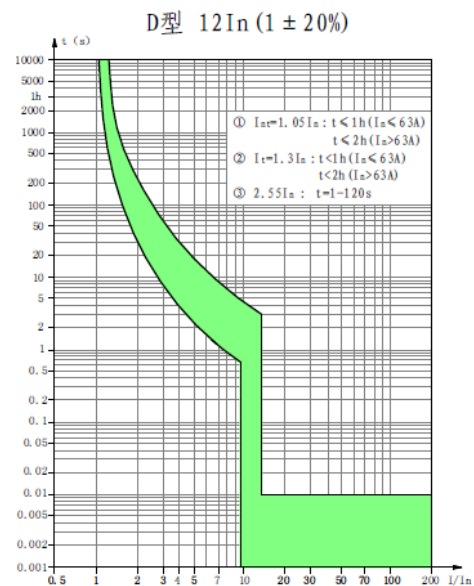
- Protect normal load and distribution wirecable
- rated current: 63A、80A、100A、125A
- tripping characteristic: The instantaneous tripping range  $8I_n$  ( $1 \pm 20\%$ )

### D type curve

- Protect starting current big impact load (Such as motor, transformer)
- rated current: 63A、80A、100A
- tripping characteristic: The instantaneous tripping rang  $12I_n$  ( $1 \pm 20\%$ )

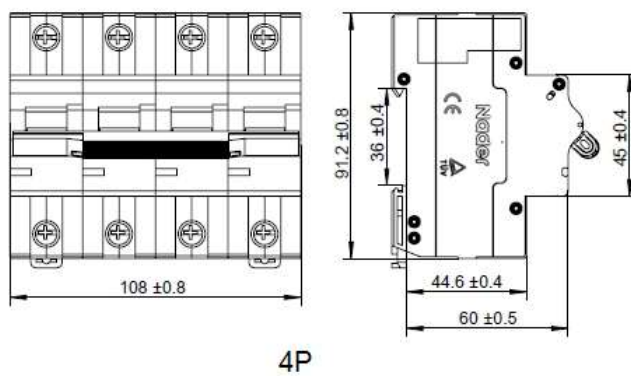
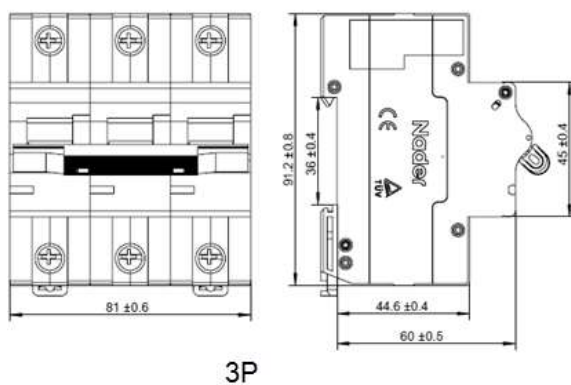
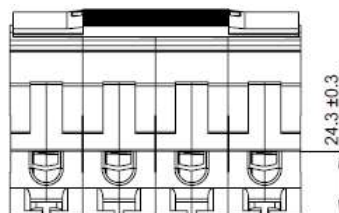
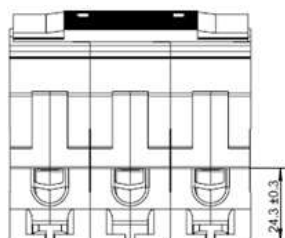
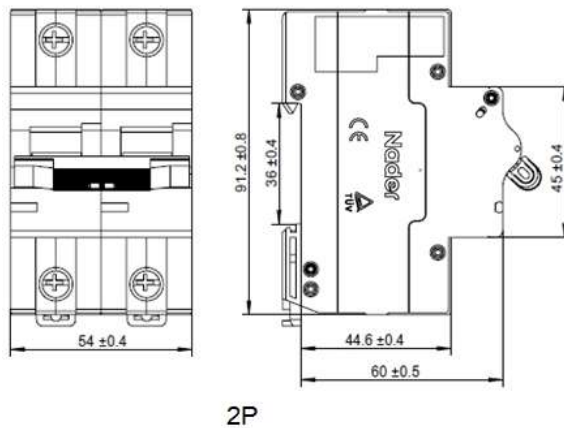
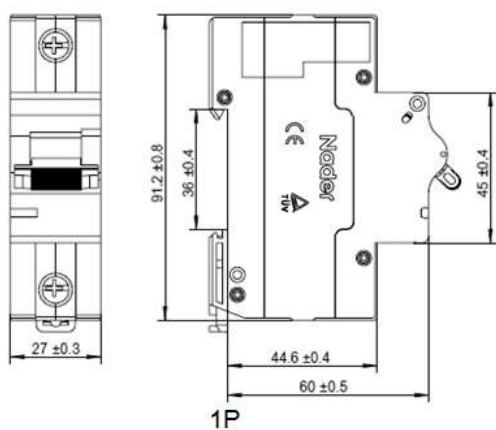
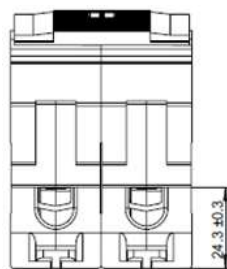
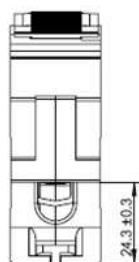


C type



D type

7、Outline dimensions



## 8、Mounting

Modular construction, can be installed in TH35mm x 7.5 standard guide rail

## 9、Packing storage

quantity (1P product: 9PCS/box, 2P product: 4PCS/box, 3P product: 3PCS/box, 4P product: 2PCS/box), Packing boxes of products should be stored in the air circulation and relative humidity is not more than 80% and the temperature is not higher than + 80 °C, Not less than - 40°C in the air around without acid, alkali or other corrosive gases stored in the warehouse. In the above conditions, the storage period since the production date not more than three years.

## 10、Notice

10.1、The manufacturer is irresponsible for quality problems caused by disassembling products privately;

10.2、Do not touch the Non-insulated and exposed parts during the electrified working condition;

10.3、Don't test characteristics of the breaker optionally, the manufacturer is irresponsible for such quality problems;

10.4、Keep wiring correct to prevent malfunction or damage of wiring terminals.